

Professional Fipronil Granule Ant Control

SAS PRO is the first non-repellent Fipronil based specially graded silica carrier granule for use in the control of nuisance ants in external surrounds of buildings and structures.

At last, a FIPRONIL granule for the targeted treatment of nuisance ants!

New SAS PRO (acronym for Sundew Ant Silica) utilises a graded quartz silica particle to ensure an even size of granule. Unlike other silica products on the market, SAS PRO has all dust and fine particles screened and removed to ensure the optimum sized carrier to deliver the fipronil active where it is needed.

Proprietary sticking agents are used to evenly coat the silica granule and an even application of the highly effective active ingredient - fipronil.

Deadly to ants, they only need come into contact through normal trailing over granules, movement of particles, or the subsequent dispersion of fipronil after rain or physical water application to a broader surface area.



Non Repellent Formulation - Undetectable Technology

Fipronil is well documented as a non-repellent active ingredient widely used in pest control for the treatment of termites, ants and other nuisance pests. Strategically in an insect management program, the use of non-repellent formulation technology is becoming more important to avoid issues related to insecticide avoidance as well as being able to distribute insecticide to greater insect population for colony eradication. This is particularly important for the control of social insects such as ants which through their interaction can distribute an insecticide throughout a colony to have maximum effect.

SAS PRO utilises the effectiveness of fipronil in its granular delivery mechanism to introduce a lethal dose into a colony situation leading to the eventual eradication of a colony with sufficient exposure.



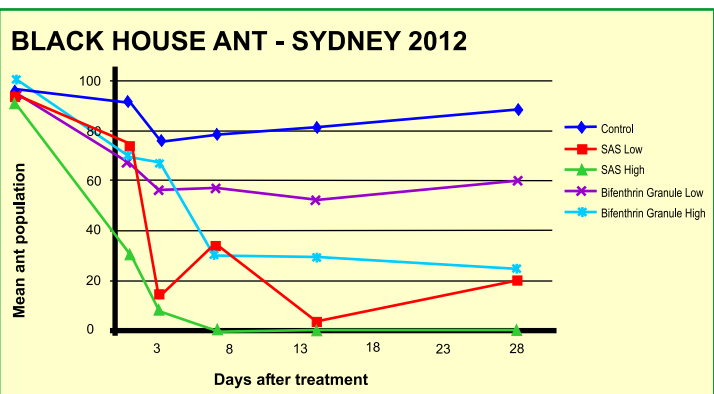
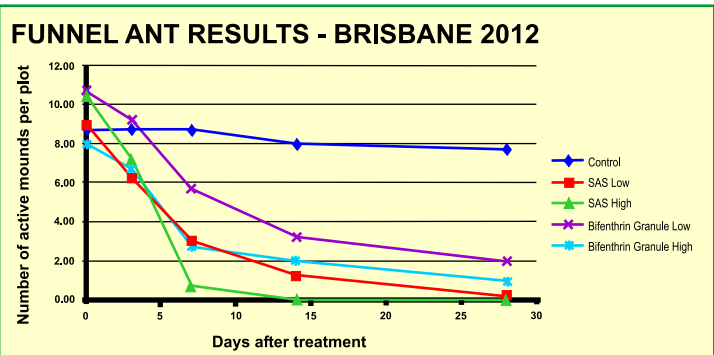
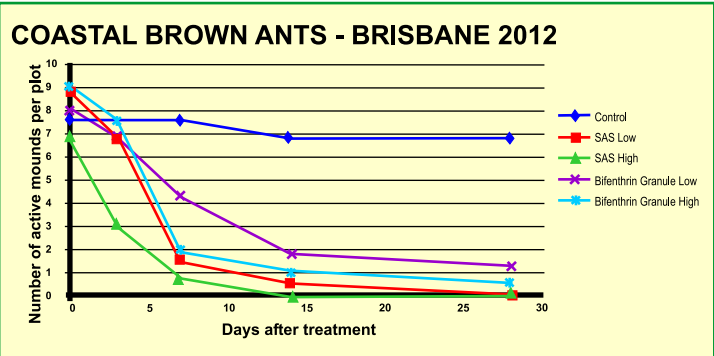
The Importance of Assessing Each Ant Situation

It is important when assessing an ant treatment to establish the potential 'biomass' of an ant colony. For example, the volume of SAS PRO required to control a small infestation of black house ants will be substantially different to that required to remove a large meat ant (*Iridomyrmex*) colony. As with any pest treatment, a thorough inspection of the area should be made to identify the ant highways, nests, locations, food and moisture sources, etc in order to effectively treat each situation.

Sundew provides to professional pest managers who purchase SAS PRO and ANTagonist[®]PRO a customer site mapping kit in order to record details of each location prior to determining a treatment plan.

Pest management professionals need to think three dimensionally, not just looking at the ground, but up and around buildings and structures, looking for pathways provided by fencing, walls, garages abutting houses, trees, vines and other vegetation which provides ready highways for ant activity.

By identifying these ant highways and establishing the potential bio-mass to be treated an effective targeted application of SAS PRO along garden edging, garden beds, between pavers, rockeries, ant trails and nests can be made.



In all field trials conducted against the standard bifenthrin granule used by professional pest managers, SAS PRO outperformed. The low use rate of SAS PRO performed better than the high use rate on the standard bifenthrin granule every time and against all ant species.



Smart Kill Technology

SAS PRO was developed specifically taking advantage of the unique properties of the





active ingredient, fipronil so that ants, through their normal social interaction can unsuspectingly come into contact with it, and spread it throughout the population with a view to eliminating the colony.

How SAS PRO and ANTAGONISTPRO Work Together

Although SAS PRO and ANTAGONISTPRO utilise similar undetectable technology to control ants, each product attacks pests on different application surfaces.

SAS PRO as a granular insecticide was designed to be applied onto broken or irregular surfaces such as garden beds, between pavers, along kerbing, around plants and trees, potted plants, ant trails, nests, etc.

ANTAGONISTPRO as a spray application has been engineered to outlast and outperform all other insecticides when applied to concrete, paths, driveways, external walls, trees, fencing, ant nests, trails etc.

The two products used in partnership together have demonstrated season long ant eradication when used as a perimeter treatment program in field trials and real world applications by pest managers in some of the most extreme conditions in Australia.

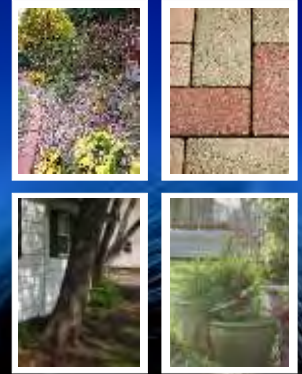


SAS PRO is ideal for the treatment of Coastal Brown Ant between pavers, along trails and direct onto nests.

SAS PRO Specifications

- Handy 10 kg bucket plus dispenser shaker
- Fipronil silica coated granule formulation
- Ideal for gardens, pavers, garden edging, potted plants, ant trails and nests
- Controls nuisance ants including but not limited to black house ant, white footed ants, odorous garden ants, and pavement ants
- AQIS statutory declaration for ANTAGONISTPRO is available at www.sundewsolutions.com.au
- Being non-scheduled SAS PRO can be used in schools and government sites
- Use rate of 7.5g - 15g per square metre to external surrounds of buildings and around structures
- SAS PRO is compatible with baiting programs
- High quality, graded silica used to ensure even application of fipronil to treated areas
- Broad spectrum of activity - sugar, protein, oil or carbohydrate feeding ants - SAS PRO controls the lot!
- Convenient and ready-to-go when you are
- Available to professional pest managers and turf specialists

SAS PRO IS IDEAL FOR:



FIPRONIL ANT GRANULE



New SAS PRO - another nail in the coffin for ants!

What makes new SAS PRO the best granular ant control product on the market today?

Features	Benefits
Non Repellent Formulation	Ants won't know what hit them until it's too late Compatible with baiting programs
Fast Acting	Customers see quick results
Low rate of active ingredient - unscheduled poison	Flexible application
Active ingredient - Fipronil	Use with confidence
Light coloured sand	Treatment is visible - you can see where you've applied it.
Smart Kill Technology™	Through social interaction SAS PRO is transferred from one ant to another resulting in localised colony elimination
Registered for the treatment of nuisance ants	Sugar, protein, oil or carbohydrate feeding ants - it doesn't matter anymore. SAS PRO controls the lot!

Now pest management professionals can treat nuisance ants with confidence. New SAS PRO in combination with ANTAGONISTPRO gives you the key.

For an effective ant treatment Sundew recommends the use of SAS PRO in partnership with Sundew ANTAGONISTPRO Professional Non Repellent Residual Insecticide which is ideal for concrete, paths, driveways, brickwork, trees, external walls, kerbing, pavers, ant trails and nests.

